



Virginia Healthcare Workforce Briefs

Indicators from the Bureau of Labor Statistics'
Current Employment Statistics Survey
Series 1: State & National Employment

Series 1, Issue 73

April 2018

Highlights

- ◆ According to preliminary estimates, Virginia's Health Care & Social Assistance (HC&SA) sector created 1,100 new jobs in March. This gain represents a one-month annualized employment growth rate of 3.1%. In addition, this gain represents the largest one-month employment gain in Virginia's HC&SA sector since last October.
- ◆ Employment growth in Virginia's total nonfarm payroll slowed in March after increasing by 29,100 jobs during the first two months of 2018. In March, the state's total nonfarm payroll increased by 4,000. This gain translates into a one-month annualized growth rate of 1.2%.
- ◆ The national HC&SA sector added 33,800 jobs in March, which represents a one-month annualized employment growth rate of 2.1%. During the first quarter of 2018, employment in the national HC&SA sector has increased by 104,600 jobs.
- ◆ After increasing by 326,000 in February, growth in the nation's total nonfarm payroll experienced a slowdown in March. The nation's total nonfarm payroll increased by 103,000 during the month. This represents the lowest one-month gain in the nation's total nonfarm payroll since last September.

Inside this Brief:

Virginia HC&SA Employment	2
Virginia Employment	2
National Employment	3
State Employment Growth	3
About the Data	4

Data in the report are seasonally adjusted. Self-employed persons, including health professionals in private practice, are not included.

Data in Brief

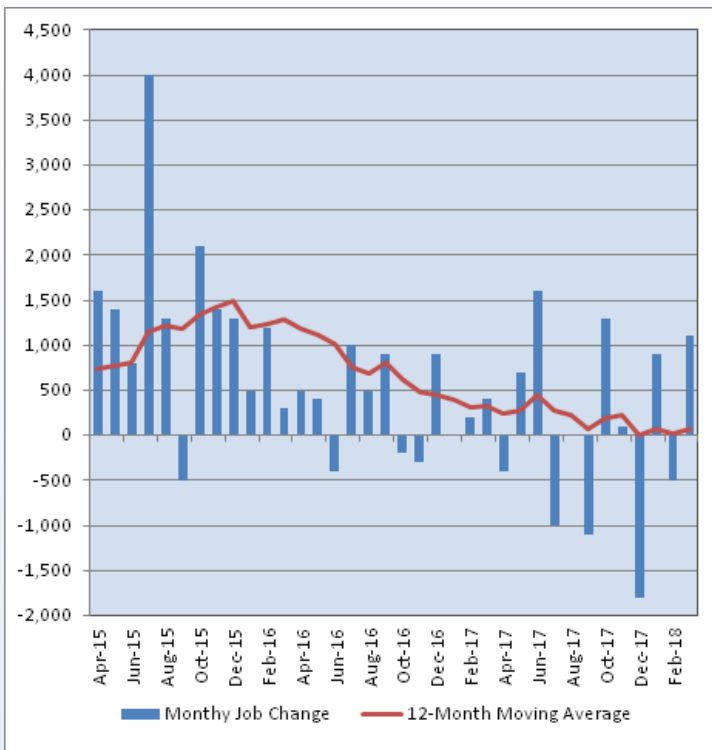
Seasonally Adjusted*	Employment, in Thousands				Growth Rate, Annualized		
	Mar. 2017	Dec. 2017	Feb. 2018	Mar. 2018	12 Month	3 Month	1 Month
Nonfarm, Total							
Virginia	3,947.7	3,954.1	3,983.2	3,987.2	1.0%	3.4%	1.2%
National	145,969.0	147,625.0	148,127.0	148,230.0	1.5%	1.6%	0.8%
Health Care & Social Assistance							
Virginia	434.2	433.6	434.0	435.1	0.2%	1.4%	3.1%
National	19,392.8	19,684.4	19,755.2	19,789.0	2.0%	2.1%	2.1%
All Other Nonfarm							
Virginia	3,513.5	3,520.5	3,549.2	3,552.1	1.1%	3.6%	1.0%
National	126,576.2	127,940.6	128,371.8	128,441.0	1.5%	1.6%	0.6%

Preliminary estimates are italicized

*Seasonally adjusted data are adjusted by the Bureau of Labor Statistics to account for weather, holidays and other seasonal changes. Economists use seasonally adjusted data to reveal underlying trends over time. This series uses seasonally adjusted data exclusively. When comparing data in this series to other HWDC series, or publications from other sources, it is important to note whether the data reported have been seasonally adjusted.

Virginia HC&SA Employment

Figure 1: Monthly Change in Employment in Virginia’s Health Care & Social Assistance Sector, Seasonally Adjusted.



According to preliminary data released on Friday, April 20, 2018, by the U.S. Department of Labor, Bureau of Labor Statistics, Virginia’s HC&SA sector rebounded strongly from its employment losses in February by creating 1,100 new jobs in March. This gain translates into a one-month annualized employment growth rate of 3.1%, which exceeds the comparable nationwide HC&SA average of 2.1%. In addition, this month’s increase represents the largest one-month employment gain in Virginia’s HC&SA sector since last October when 1,300 jobs were created.

During the first quarter of 2018, employment in Virginia’s HC&SA sector increased by 1,500 jobs, a gain that represents a three-month annualized growth rate of 1.4%. Although this growth rate is below the national average, it represents a significant improvement relative to the previous year. In Q1 2017, Virginia’s HC&SA sector only created 600 new jobs.

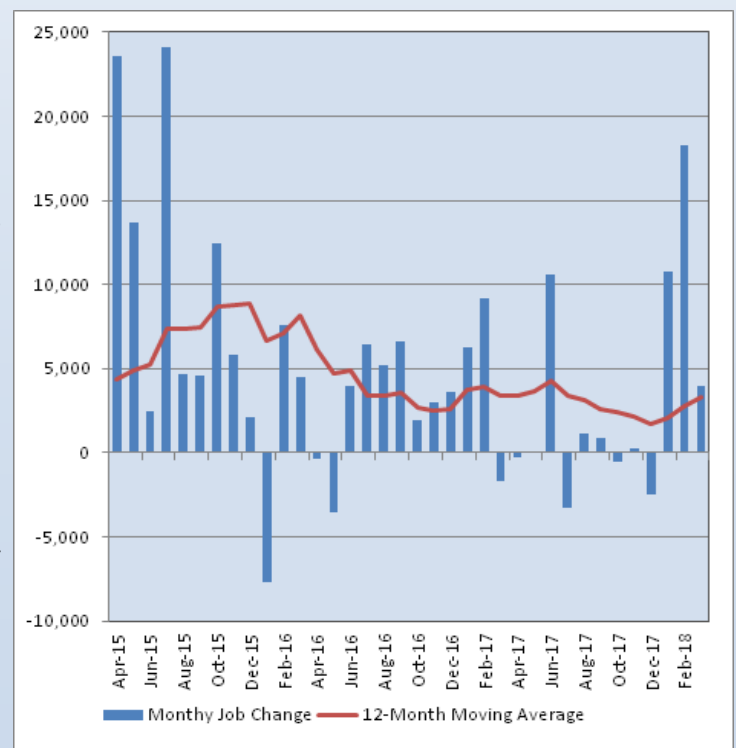
Long-term HC&SA employment growth in the state remains rather weak. Over the past year, Virginia’s HC&SA sector has created a total of just 900 jobs.

Virginia Employment

Virginia’s total nonfarm payroll increased for the third consecutive month after growing by 4,000 in March. This gain represents a one-month annualized growth rate of 1.2%, which exceeds the comparable nationwide average of 0.8%. Regardless, this month’s increase was considerably smaller than the employment gains that were observed over the previous two months. During the first quarter of 2018, Virginia’s total nonfarm payroll increased by 33,100. This quarterly employment gain was due primarily to the increase of 29,100 jobs during the first two months of the year.

Regardless, Virginia’s total nonfarm payroll continues to demonstrate strong signs of improvement. Over the past three months, Virginia’s total nonfarm payroll grew at more than twice the rate of the overall national average. In addition, this quarter’s total gain represents a marked improvement relative to Q1 2017 when only 13,800 new jobs were created across the state. Thanks to this improvement, the 12-month moving average of the change in Virginia’s total nonfarm payroll reached an eight-month high in March. Over the past year, the state’s total nonfarm payroll has increased by an average of 3,292 jobs per month.

Figure 2: Monthly Change in Employment in Virginia’s Total Nonfarm Payroll, Seasonally Adjusted.

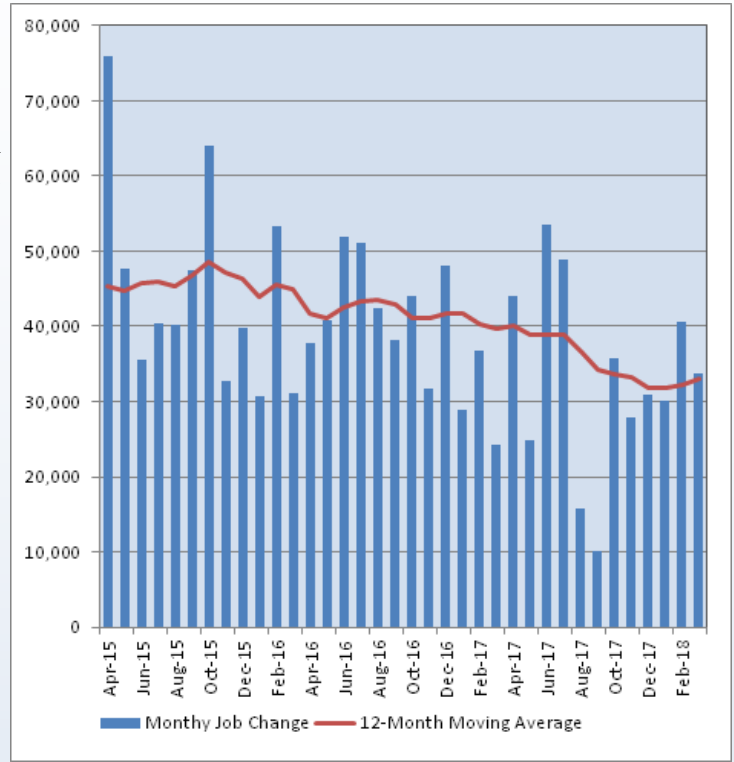


National Employment

The national HC&SA sector created 33,800 jobs in March, which represents a one-month annualized employment growth rate of 2.1%. During the first quarter of 2018, employment in the national HC&SA sector increased by 104,600 jobs. This also represents a 2.1% annualized growth rate. At the same time, this quarterly employment gain represents an improvement relative to the year-ago quarter. In Q1 2017, the national HC&SA sector increased by 89,800 jobs. Thanks to March’s job growth, the 12-month moving average of the change in national HC&SA employment increased to a four-month high of 33,017. However, this growth still has done little to reverse the downward trend in the moving average.

Meanwhile, growth in the nation’s total nonfarm payroll slowed considerably during the month. After growing by 326,000 in February, the nation’s total nonfarm payroll increased by only 103,000 in March. This gain represents a one-month annualized growth rate of 0.8%. This is well below its current three-month annualized growth rate. During Q1 2018, the nation’s total nonfarm payroll increased by 605,000. This quarterly employment gain translates into a 1.6% annualized growth rate.

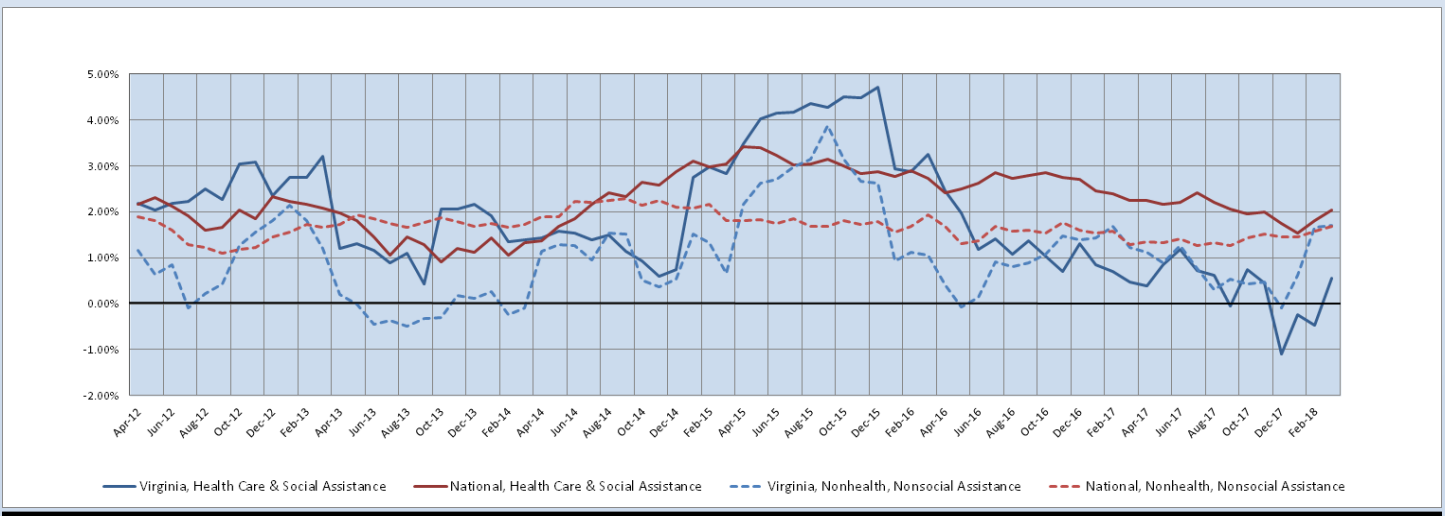
Figure 3: Monthly Change in Employment in National Health Care & Social Assistance Sector, Seasonally Adjusted



State Employment Growth

After remaining negative for three consecutive months, the six-month moving average of the employment growth rate of Virginia’s HC&SA sector rebounded strongly in March from -0.46% to 0.55%. This represents the highest level for this six-month moving average since last October. Regardless, employment growth in Virginia’s HC&SA sector still remains well below the statewide average. The six-month moving average of the growth rate in Virginia’s total nonfarm payroll increased for the third consecutive month from 1.65% to 1.70%, thereby reaching its highest value since December of 2015. This is just slightly higher than the 1.69% employment growth rate moving average for the nation’s total nonfarm payroll. As for the national HC&SA sector, its six-month employment growth rate moving average increased from 1.80% to 2.04%.

Figure 4: Six-Month Moving Average, Employment Growth, Seasonally Adjusted



**Healthcare Workforce
Data Center**

Perimeter Center
9960 Mayland Drive, Suite 300
Henrico, VA 23233-1463

Phone: (804) 367-2115
Fax: (804) 527-4434
E-mail: hwdc@dhp.virginia.gov

www.dhp.virginia.gov/hwdc/

HWDC Staff:

Elizabeth Carter, Ph.D. <i>Executive Director</i>	Yetty Shobo, Ph.D. <i>Deputy Director</i>
Laura Jackson <i>Operations Manager</i>	Christopher Coyle <i>Research Assistant</i>

Follow us on. . .

Tumblr: <http://vahwdc.tumblr.com/>

The Department of Health Professions Healthcare Workforce Data Center works to improve the data collection and measurement of Virginia's healthcare workforce through regular assessment of workforce supply and demand issues among the 80 professions and 350,000 practitioners licensed in Virginia by DHP.

The HWDC collects data on Virginia's licensed health professionals through surveys completed during the online license renewal and application process. Survey results and data may be accessed on our website: www.dhp.virginia.gov/hwdc/.

The HWDC also provides a series of Virginia Healthcare Workforce Briefs based on data collected by the US Department of Labor's Bureau of Labor Statistics and the US Department of Commerce' Bureau of Economic Analysis.

Virginia Healthcare Workforce Briefs:

Series 1: State & National Employment (Monthly)

Series 2: Virginia Regional Employment (Monthly)

Series 3: Income & Compensation (Quarterly)

About the Data

Data in this report are from the US Department of Labor, Bureau of Labor Statistics' Current Employment Statistics program. The CES program surveys about 143,000 businesses and government agencies monthly. Unless otherwise noted, this series uses seasonally-adjusted data that removes seasonal variations related to weather, holidays, weekends, seasons and other predictable variations. This allows us to better examine underlying trends in the labor market. Data from recent months are preliminary and subject to revision in future releases from the CES. Revisions will be reported in future editions of this series. Unless otherwise noted, the CES data presented in this series:

Includes:

- ◆ Data on employed individuals drawing a paycheck (payroll employees).
- ◆ All employees, regardless of role, occupation or hours worked.
- ◆ HC&SA employees in the private sector only.
- ◆ Persons employed by health professionals in private practice.
- ◆ Both government and private sector workers in nonfarm employment data.

Does not include:

- ◆ Self-employed workers or volunteers, including health professionals in private practice.
 - ◆ HC&SA employees in the public sector. (These are counted as government workers in monthly reports).
 - ◆ Information on hours worked or the quality of employment.
 - ◆ Government workers in HC&SA level data. (Government workers, regardless of occupation and role, are classified as public sector employees).
-